

COURSE 2022-2023

# Enrollment Guide PS

Polytechnic School



# Degrees and Groups

## Degree in Architecture (taught in Spanish)

**Subjects** of the Degree in Architecture in Spanish: Group **101** or Group 102.

## Degree in Architecture (taught in English)

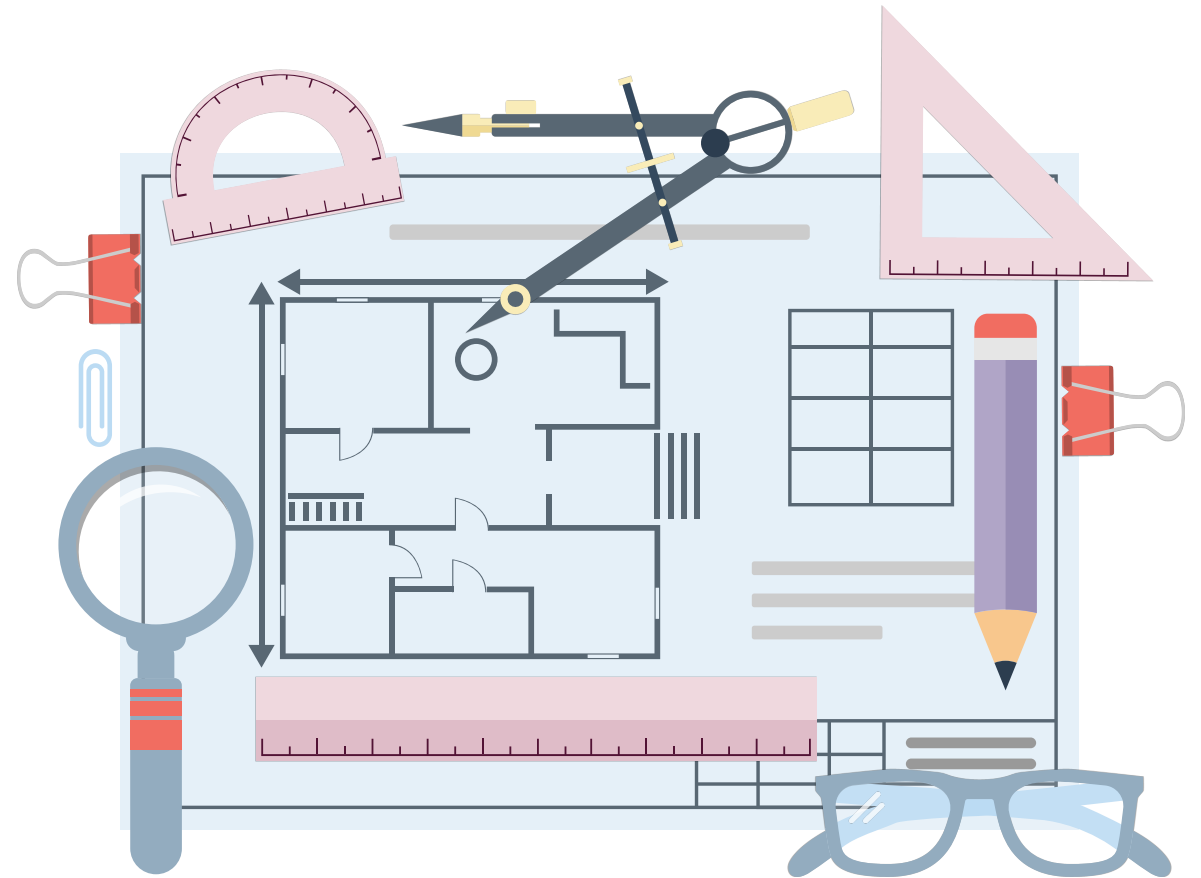
**Degree in Architecture courses:** choose Group **201**

## Master's Degree in Interior Design

Interior Design **Subjects:** Group **301**

(all taught in Spanish)

**DOUBTS:** [cperez.eps@ceu.es](mailto:cperez.eps@ceu.es)



# Degrees and Groups

## Degree in Digital Art

All: Group 101

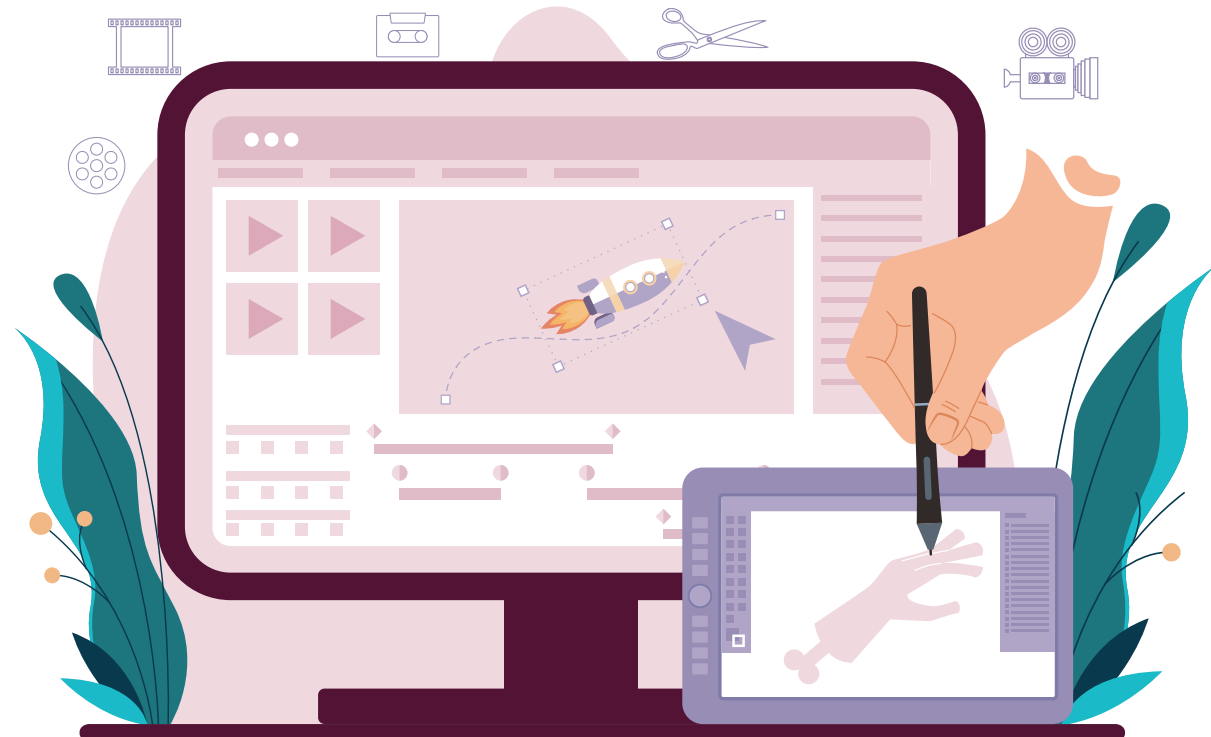
## Degree in Engineering in Animation and Video Game Technologies

All: Group 101

## Double Degree in Engineering in Animation and Video Game Technologies + Degree in Digital Art

All: Group 101

DOUBTS: [cperez.eps@ceu.es](mailto:cperez.eps@ceu.es)



# Degrees and Groups

## Degree in Biomedical Engineering (two possible options)

**Option 1:** Groups **102 + 202** (depending on whether the subject is taught in Spanish or English)

**Option 2:** Groups **101 + 201** (depending on whether the subject is taught in English or Spanish)

## Degree in Information Systems Engineering (two possible options)

**Option 1:** Group **101**

**Option 2:** Group **102**

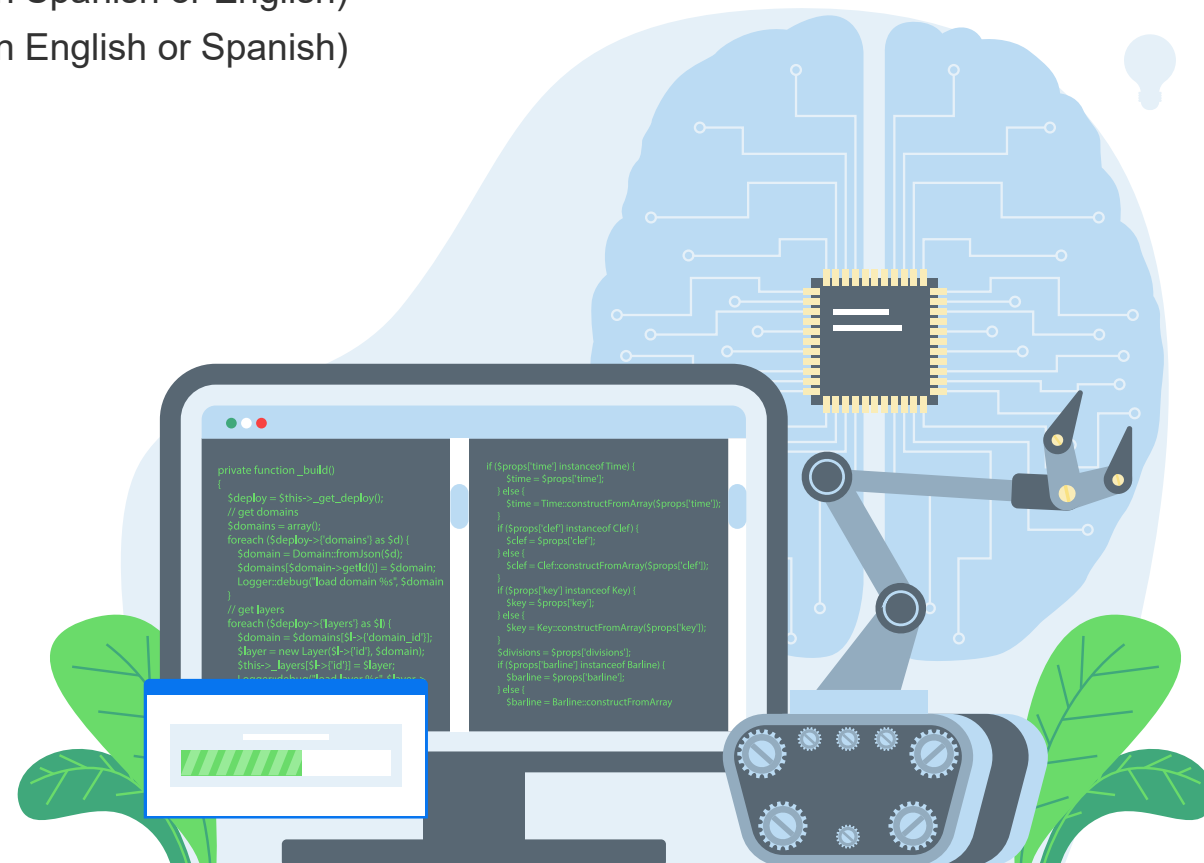
## Degree in Telecommunication Systems Engineering

**All:** Group **101**

## Degree in Mathematical Engineering

**All:** Group **101**

**DOUBTS:** [cperez.eps@ceu.es](mailto:cperez.eps@ceu.es)



# Degrees and Groups

## Double Degree in Biomedical Engineering + Telecommunication Systems Engineering

All: Group **101 + 201** (depending on whether the course is taught in Spanish or English)

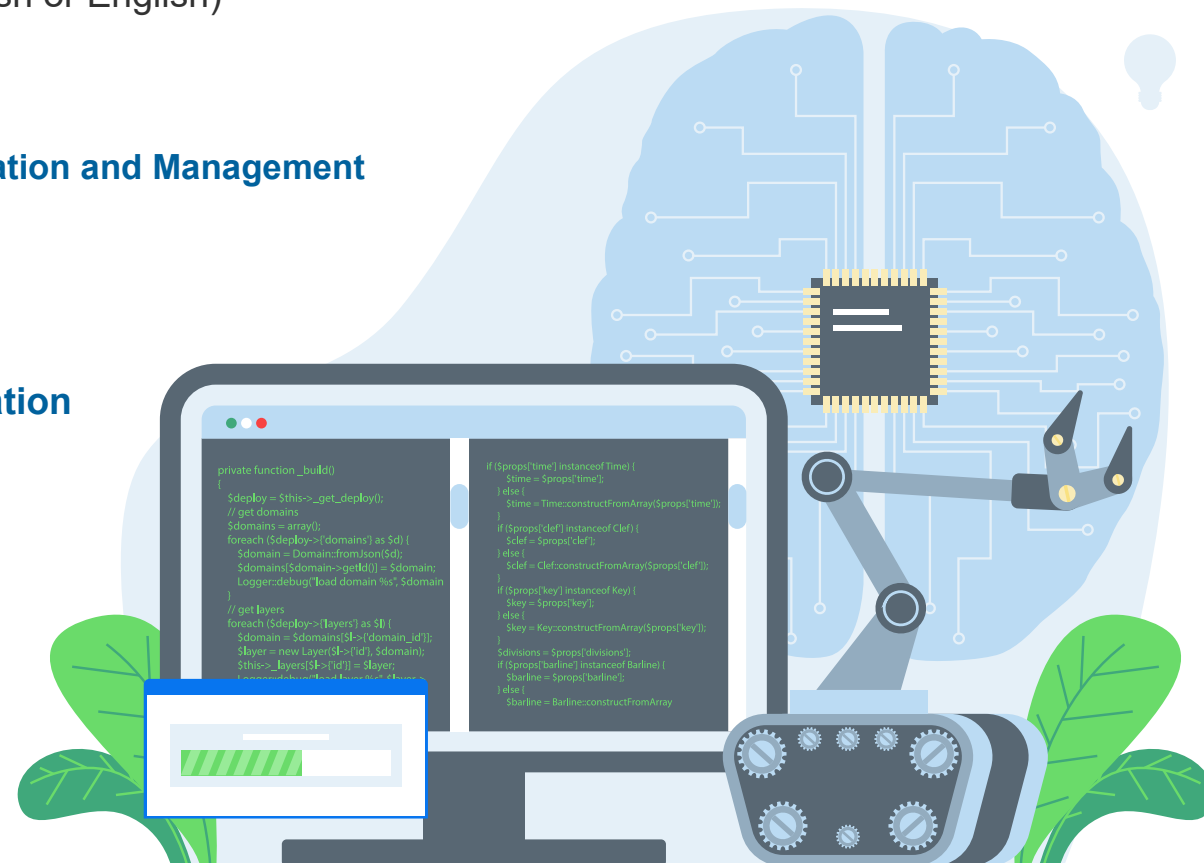
## Double Degree in Information Systems Engineering + Business Administration and Management

All: Groups **102 + 880**

## Double Degree in Telecommunication Systems Engineering + Information Systems Engineering

All: Group **101**

DOUBTS: [cperez.eps@ceu.es](mailto:cperez.eps@ceu.es)





## Admissions and New Student Services

Julián Romea, 18 - 28003 - Madrid  
Tel.: +34 91 514 04 04 | [info.usp@ceu.es](mailto:info.usp@ceu.es)

[www.uspceu.com](http://www.uspceu.com)