

ACADEMIC YEAR
2024-2025

Enrollment Guide EPS

Institute of Technology



Degrees and Groups

Bachelor's degree in Architecture (taught in Spanish)

Subjects of the Bachelor's degree in Architecture in Spanish:

Group **101** or Group 102

You must choose the same theory group for all subjects.

Bachelor's degree in Architecture (English taught)

Courses of the Bachelor's degree in Architecture :

Choose group **201** or group **202**.

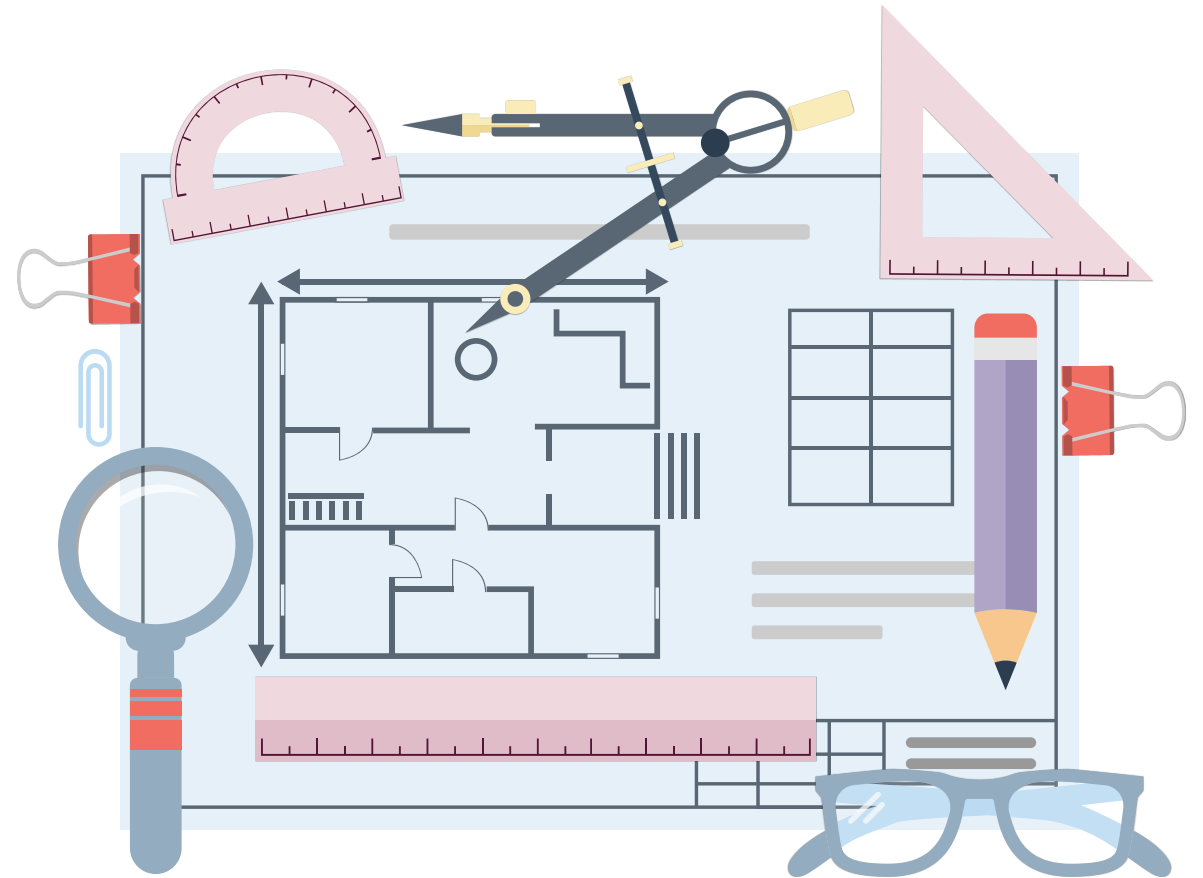
You must enrol in the same group for all your courses.

Master's degree in Interior Design

Subjects of the Master's degree in Interior Design: Group 301

(taught in Spanish)

QUESTIONS: agiralt@ceu.es



Degrees and Groups

Bachelor's degree in Interior Design

Subjects of the Bachelor's degree in Interior Design in Spanish:

Theory Group 101

+Group 702 subject: *Keys to Contemporary History*

Bachelor's degree in Interior Design

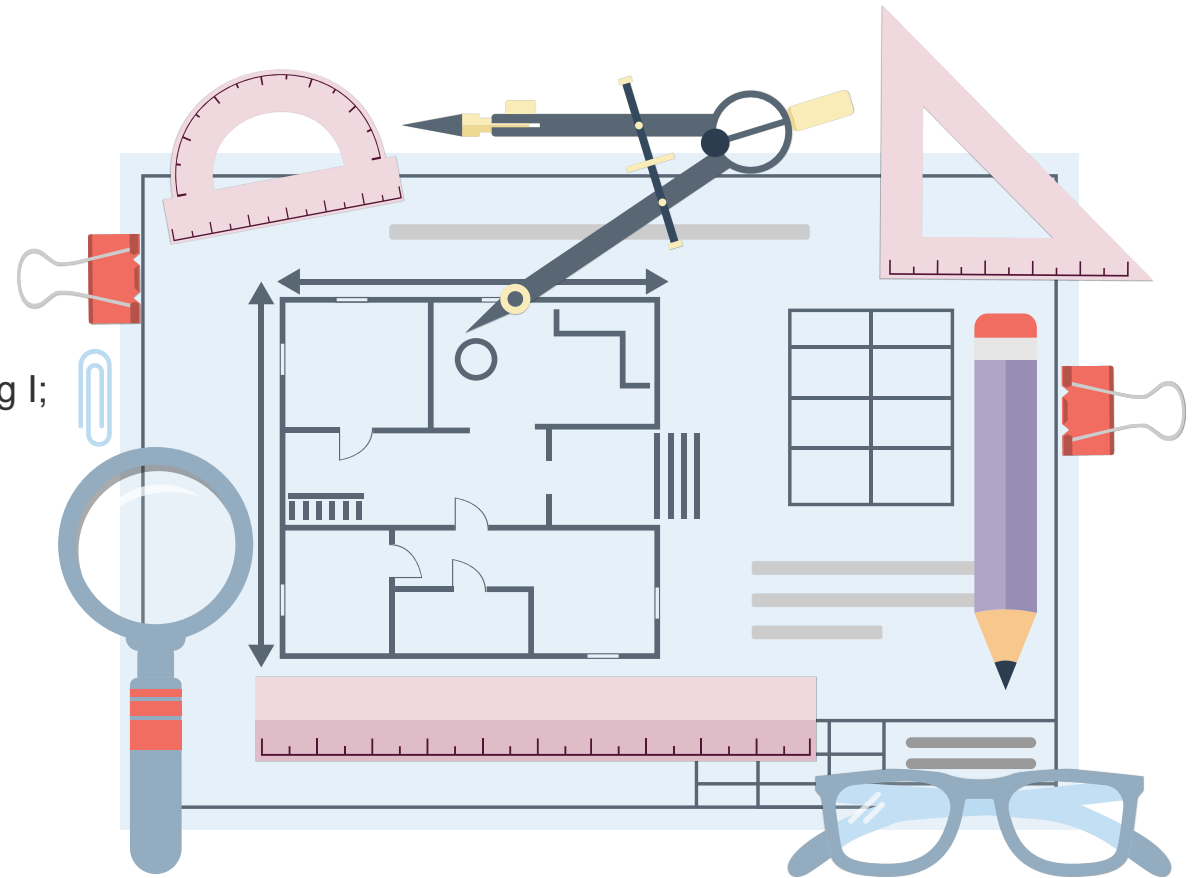
Courses in English of the Bachelor's degree in Interior Design:

Group 201 Forms Analysis Drawing I and II; Computer Assisted Drawing I; Design Strategies

+Group 802 *Keys of Contemporary History*

Others: Group 101

QUESTIONS: agiralt@ceu.es



Degrees and Groups

Bachelor's degree in Digital Art

All: Theory Group 101

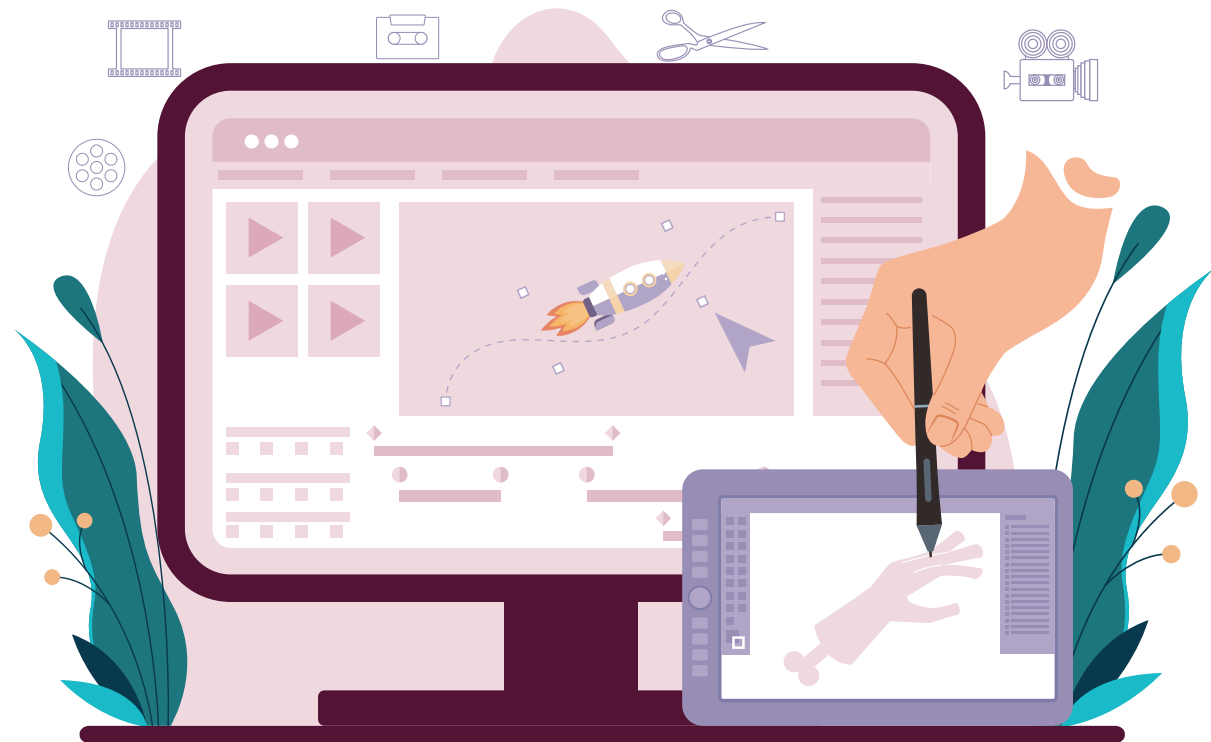
Bachelor's degree in Engineering in Animation and Video Game Technologies

All: Theory Group 101

Dual Bachelor's degree in Engineering in Animation and Video Game Technology + Bachelor's degree in Digital Art

All: Theory Group 101

QUESTIONS: agiralt@ceu.es



Degrees and Groups

Bachelor's degree in Biomedical Engineering (two possible options)

Option 1: Groups **101 + 201** (depending on whether the subject is taught in Spanish or English)

+Group 806 Subject: *Keys to Contemporary History*

Option 2: Groups **102 + 202** (depending on whether the course is taught in Spanish or English)

+Group 809 Subject: *Keys to Contemporary History*:

Bachelor's degree in Information Systems Engineering (two possible options)

Option 1: Group **101**

+Group 701 Subject: *Keys to Contemporary History*

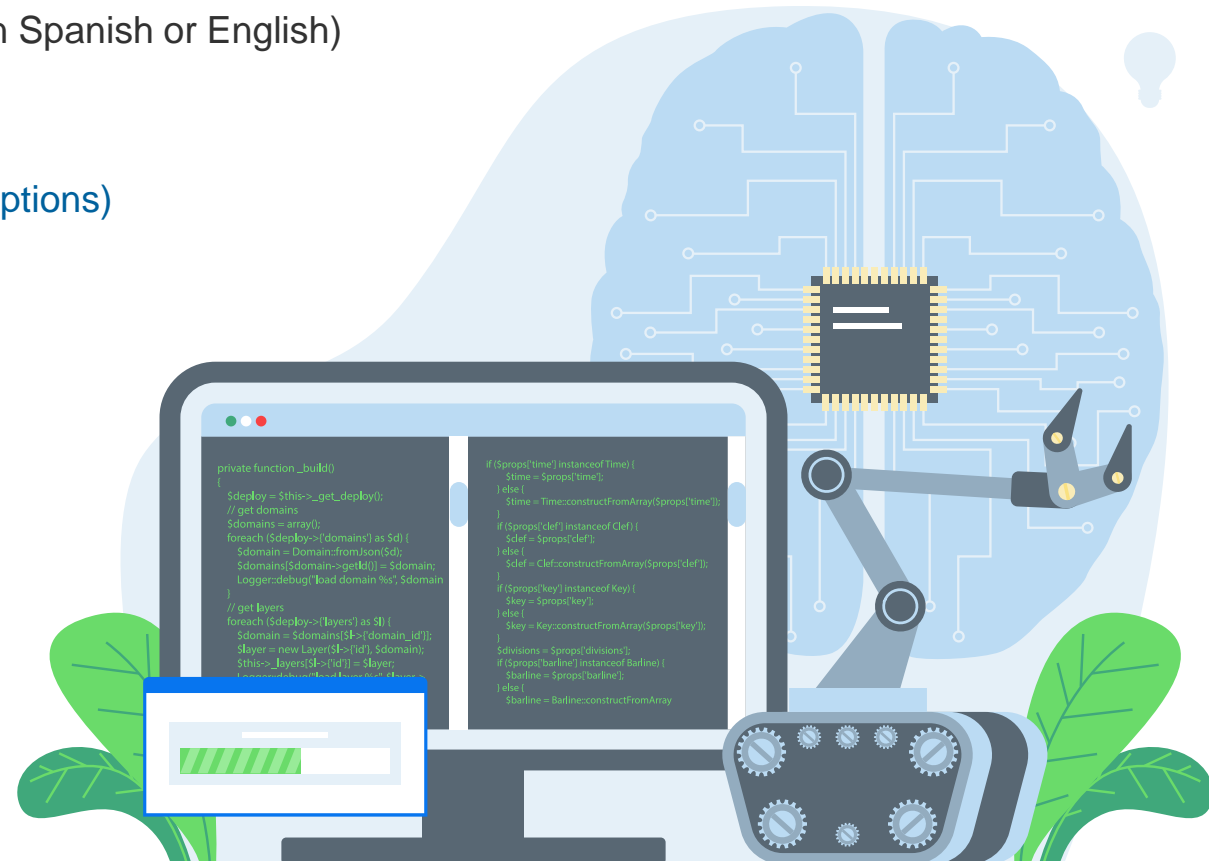
Option 2: Group **102**

+Group 711 Subject: *Keys to Contemporary History*

International Group: 201 (*English taught*)

+Group 801 *Keys of Contemporary History*

QUESTIONS: agiralt@ceu.es



Degrees and Groups

Bachelor's degree in Telecommunication Systems Engineering

All: Group 101

+Group 703 Subject: *Keys to Contemporary History*

Bachelor's degree in Mathematical Engineering

All: Group 101

Bachelor's degree in Data Science and Engineering

All: Group 101

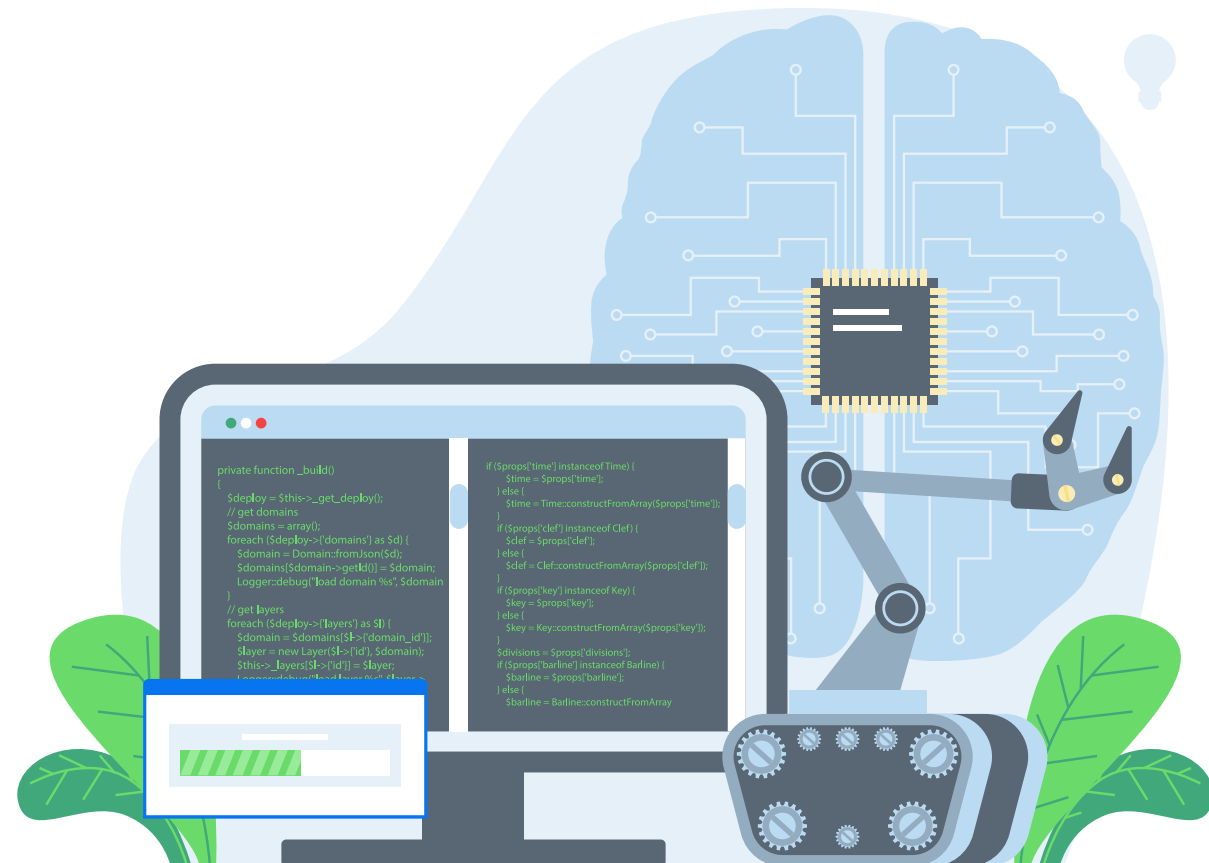
+Group 700 Subject: *Keys to Contemporary History*

Dual Bachelor's degree in Mathematical Engineering + Data Science and Engineering

All: Group 101

+Group 707 Subject *Keys to Contemporary History*

QUESTIONS: agiralt@ceu.es



Degrees and Groups

Dual Bachelor's degree in Biomedical Engineering + Telecommunication Systems Engineering

All: Group 101 + 201 (depending on whether the course is taught in English or Spanish)

+Group 710 Keys to Contemporary History

Dual Bachelor's degree in Information Systems Engineering + Business Administration and Management

All: Group 101 + 880

+Group 704 Keys to Contemporary History

Dual Bachelor's degree in Telecommunication Systems Engineering + Information Systems Engineering

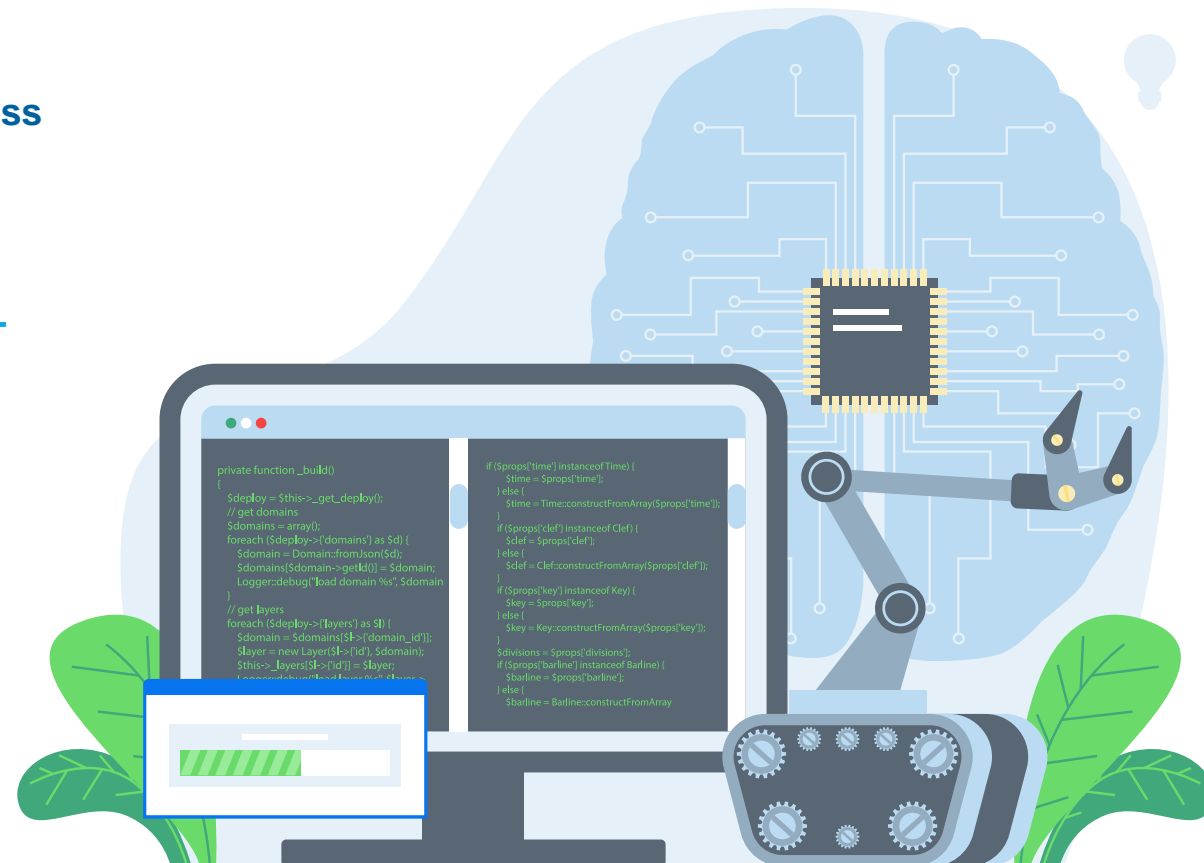
All: Group 101

+Group 705 Keys to Contemporary History

Dual Bachelor's degree in Physics + Mathematical Engineering

All: Group 301

QUESTIONS: agiralt@ceu.es





Admissions and New Student Services

Julián Romea, 18 - 28003 - Madrid
Tel.: +34 91 514 04 04 | info.usp@ceu.es

www.uspceu.com